

Newsletter 02/2009

NEW GPS/FISHFINDER COMBOS

TechmarineTM

...the Luxury Brand in Marine Electronics.

GPS Chart Plotter With Built-in Dual-Frequency Depth Sounder T-50.06 FF / T-55.06 FF

- **Advanced GPS Chart Plotting System Using Fast 300Mhz Arm 9 Processor for Smooth, Fast Zooms and Screen Updates.**
- **Includes Powerful, Built-in 600 Watt 50/200 kHz Dual Frequency Fishfinder.**
- **Includes Hi-Accuracy WAAS Differential GPS Antenna .**
- **Features 7" Wide Sunlight Viewable Color Display with 16:9 Format—Perfect for Split-Screen Views.**
- **Easily Connects to Optional Radar or AIS Receivers—Making the T-50.06 FF and T-55.06 a Complete Navigation and Fishing Tools.**
- **Uses latest C-Map by Jeppesen Max Cartography, Complete With Aerial Pictures and Safety Route Checking**



Techmarine new T-50.06 FF and T-55.06 FF add powerful 600 Watt rms, dual-frequency fishfinder capabilities to our best seller GPS chartplotters. The T-55.06 FF includes an internal WAAS GPS antenna, while the T-50.06 FF comes complete with an external antenna. The wide, sunlight viewable display gives you the “big picture” while being easy on the eyes and providing truly useable side-by-side split screen displays.

The T-50.06 FF Series WAAS/GPS receiver gives performance with amazing accuracy - typically better than 3 meters! Its powerful 300 Mhz ARM processor provides a wealth of important navigation features, like north-up or course-up map orientation, tide predictions, 3-D runway displays, many advanced side-by-side navigational and fishing displays, operation in lat/lon or UTM, and much more – all at lightening-fast speed!

The built-in fishfinder comes complete with advanced features such as A-Scope to see sonar data in real time, selectable Zoom ranges, Bottom Lock, White Line, Fish Symbols relating to actual fish sizes, water speed and water temperature. The T-50.06 FF and T-55.06 FF Series also include a full range of alarms to warn of shallow water, deep water, fish, and temperature range.

Both models feature a unique forward-looking alarm, using cartography data, which can be set to monitor the course up to 1 mile ahead for dangerous obstructions or shallow water. The T-50.06 FF and T-55.06 FF Series boast an incredible 64 MB of internal memory to store up to 10000 waypoints, 50 routes, and 5 tracks with 10000 track points using seven different colors. Connect one of Techmarine’s optional radar scanners and you’ll have a complete GPS/Fishfinder/Radar system—all in one easy to use compact package!

Newsletter 02/2009

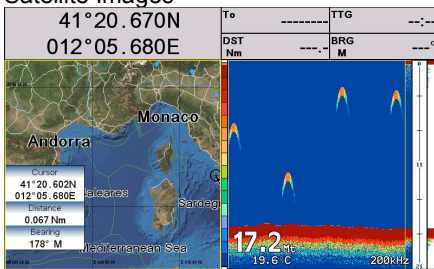
NEW GPS/FISHFINDER COMBOS

Even though ruggedly built, with powerful navigation tools and professional features, the T-50.06 FF and T-55.06 FF are easy to use and understand. In the Techmarine tradition, both models represent great values.

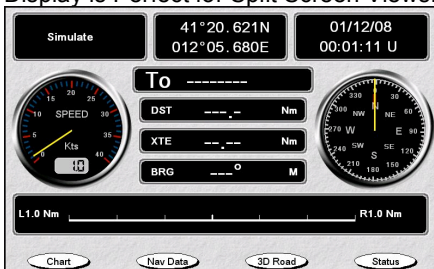
Techmarine new T-50.06 FF and T-55.06 FF Series combine an advanced GPS Plotter with a powerful 600 Watt Dual Frequency Depthsounder. The convenient combination optimizes dash space and minimizes cabling and clutter. Connect an optional techmarine radar module or an A.I.S. receiver for a complete Nav Station in one convenient display. The size and ruggedness of the new T-50.06 FF and T-55.06 FF make them perfect for mounting on flying bridges, center consoles, in cockpits and at the helm of serious sailing vessels. The new T-50.06 FF and T-55.06 FF come complete with a world wide background map using satellite images and accept C-Map by Jeppesen's latest Max Cartography including valuable aerial photographs.



Built-In World Wide Background Map With Satellite Images



Side by Side Split Screen with GPS Map on Left and Fishfinder on Right. The Wide Display is Perfect for Split Screen Views.



Navigation data page available

• GPS Chartplotter

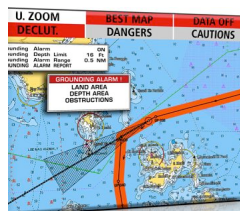
- Uses latest MAX Cartography, Built-in Worldwide Background Map with Satellite Images and Multi Languages
- Internal or External WAAS GPS Antenna
- 10000 Waypoints, and 50 Routes.
- 5 Tracks in 7 color with Up to 10000 Points
- 16 Types of User Marks
- Forward Looking Chart
- Depth Alarm Automatic Information on Cartographic Objects
- Smooth Zooms With Turbo Mode For Ultra Fast Changes.
- Unique Safety Route Check Feature
- Simulation/Demo Mode
- M.O.B. Function

• Fishfinder

- Dual 50 and 200 kHz 600 Watts RMS (4,800 W Peak-Peak)
- Auto Range, Gain, Shift and Ping Rate Zoom: X2, X4 and by Selected Range Bottom Lock and White Line
- Adjustable STC
- Fish Symbol: Shows Size and Depth Water Speed and Trip Log
- Surface Water Temperature
- A-Scope "Real Time" Display
- Alarms: Shallow and Deep Depth, Fish and Both Upper and Lower Temp Alarms
- Side by Side Split Screen Views of 50khz and 200khz
- Side by Side Split Screen View of Chart and Fishfinder

www.techmarine-europe.com

C-MAP by JEPPESEN MAX CARTOGRAPHY

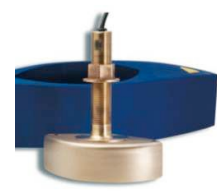


safety route checking

Airmar TRANSDUCERS



Transom Mount



Thru-hull